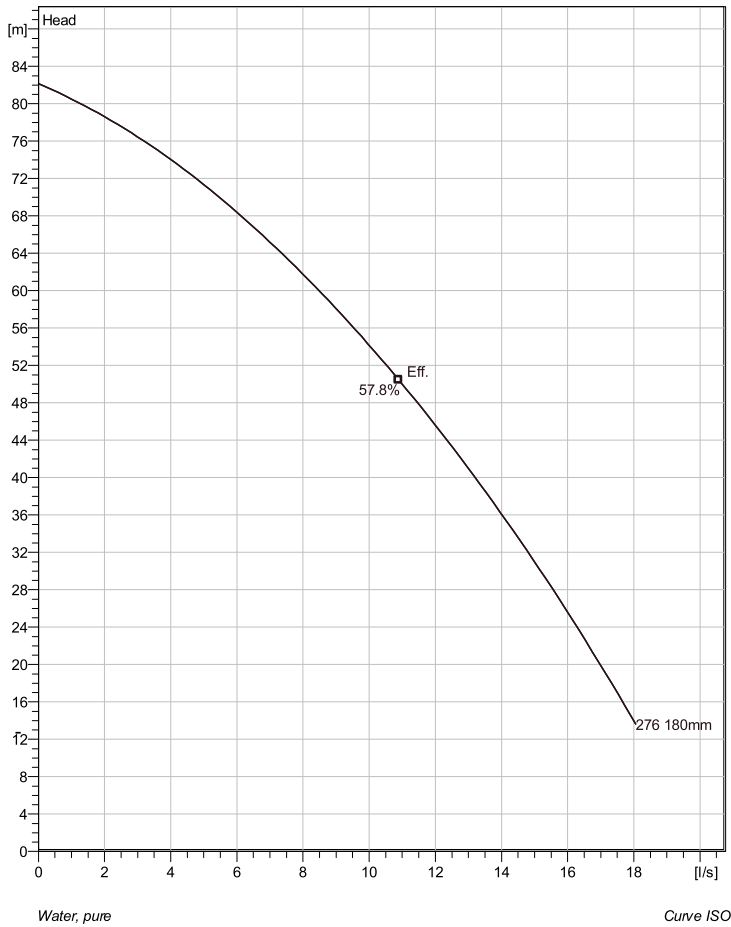


BS 2660 SH 3~ 276 Technical specification



Note: Picture might not correspond to the current configuration.

General

Portable pumps ideal for applications in which the water or liquid contains concentrations of abrasives.

Impeller

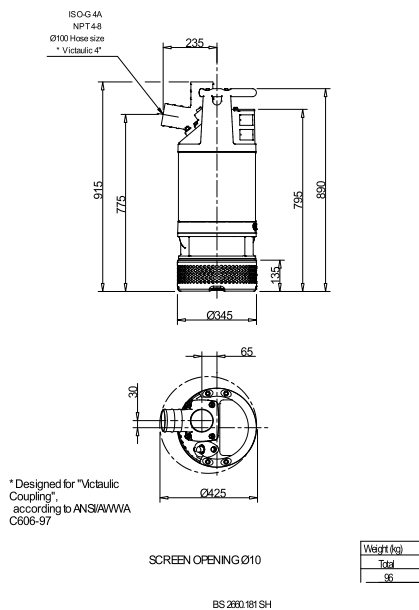
Impeller material	Hard-Iron
Discharge Flange Diameter	100 mm
Suction Flange Diameter	100 mm
Impeller diameter	180 mm
Number of blades	3

Motor

Motor #	B2660.181 18-15-2BB-W 10KW Standard
Stator variant	2
Frequency	50 Hz
Rated voltage	400 V
Number of poles	2
Phases	3~
Rated power	10 kW
Rated current	19 A
Starting current	119 A
Rated speed	2870 rpm
Power factor	
1/1 Load	0.87
3/4 Load	0.82
1/2 Load	0.71
Motor efficiency	
1/1 Load	85.8 %
3/4 Load	87.4 %
1/2 Load	87.6 %

Configuration

Installation: S - Portable Semi permanent, Wet



Project	Project ID	Created by	Created on 7/6/2018	Last update
---------	------------	------------	------------------------	-------------

BS 2660 SH 3~ 276

Performance curve

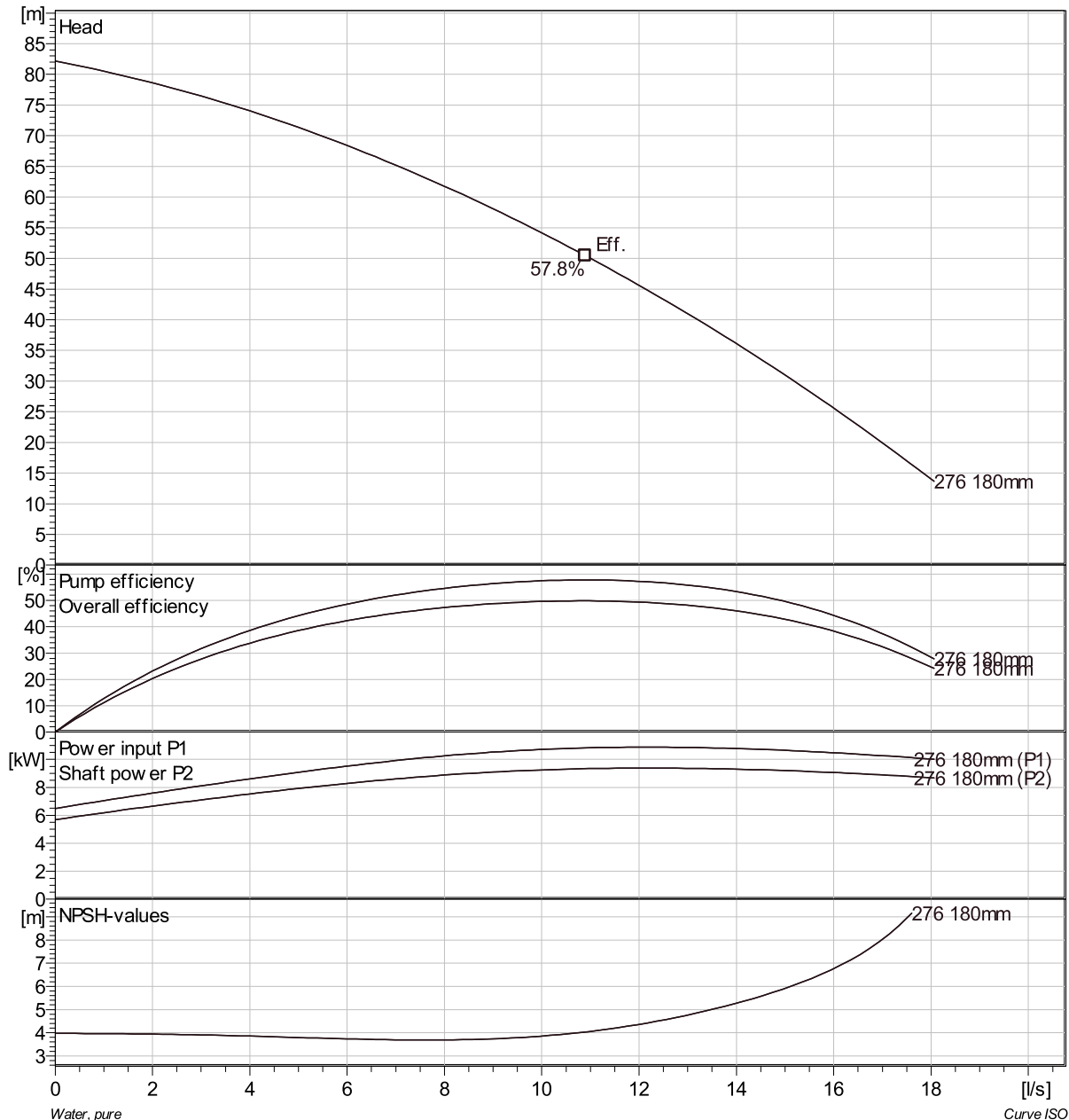
Pump

Discharge Flange Diameter 100 mm
 Suction Flange Diameter 100 mm
 Impeller diameter 180 mm
 Number of blades 3

Motor

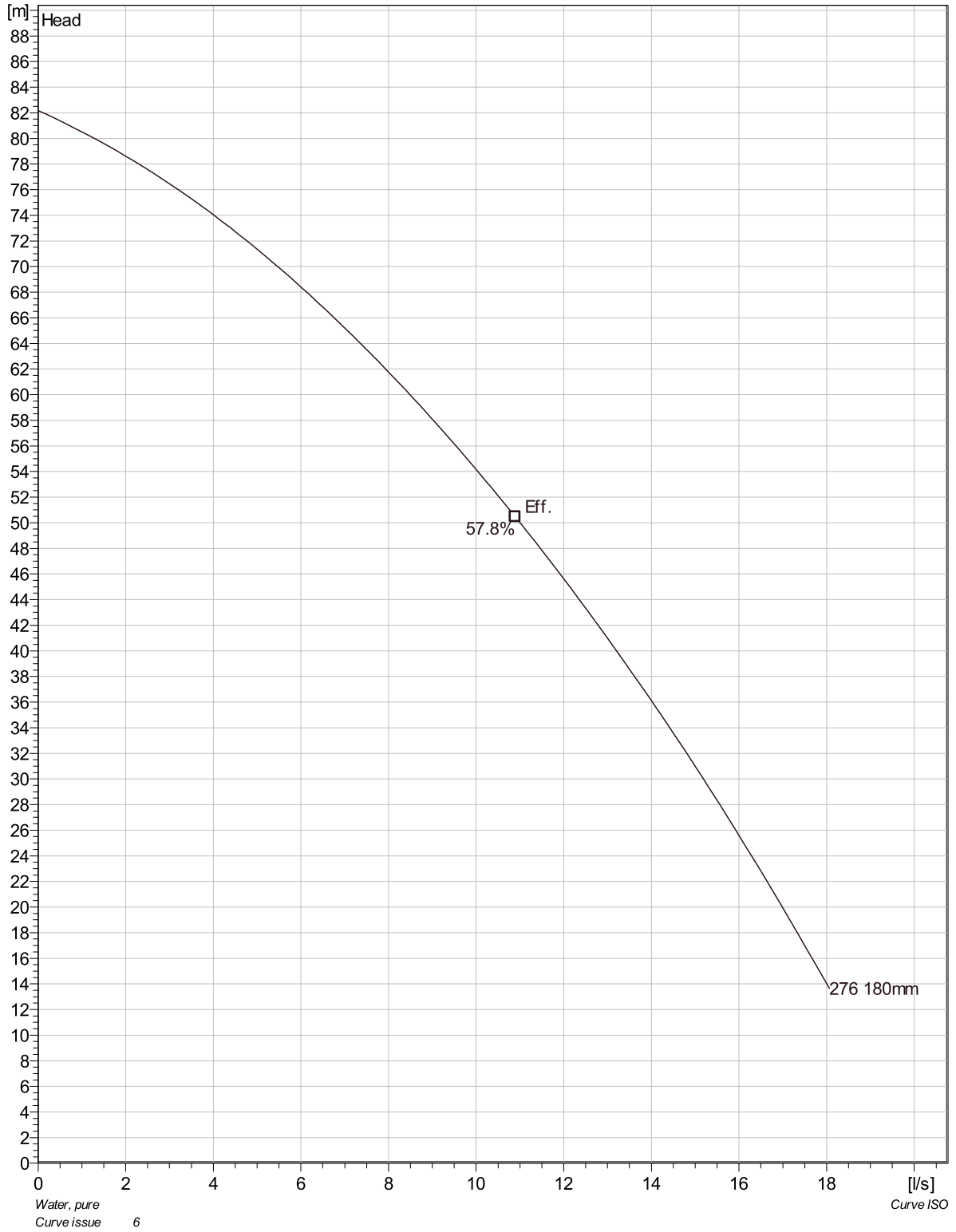
Motor # B2660.181 18-15-2BB-W 10KW
 Stator variant 2
 Frequency 50 Hz
 Rated voltage 400 V
 Number of poles 2
 Phases 3~
 Rated power 10 kW
 Rated current 19 A
 Starting current 119 A
 Rated speed 2870 rpm

Power factor
 1/1 Load 0.87
 3/4 Load 0.82
 1/2 Load 0.71
 Motor efficiency
 1/1 Load 85.8 %
 3/4 Load 87.4 %
 1/2 Load 87.6 %

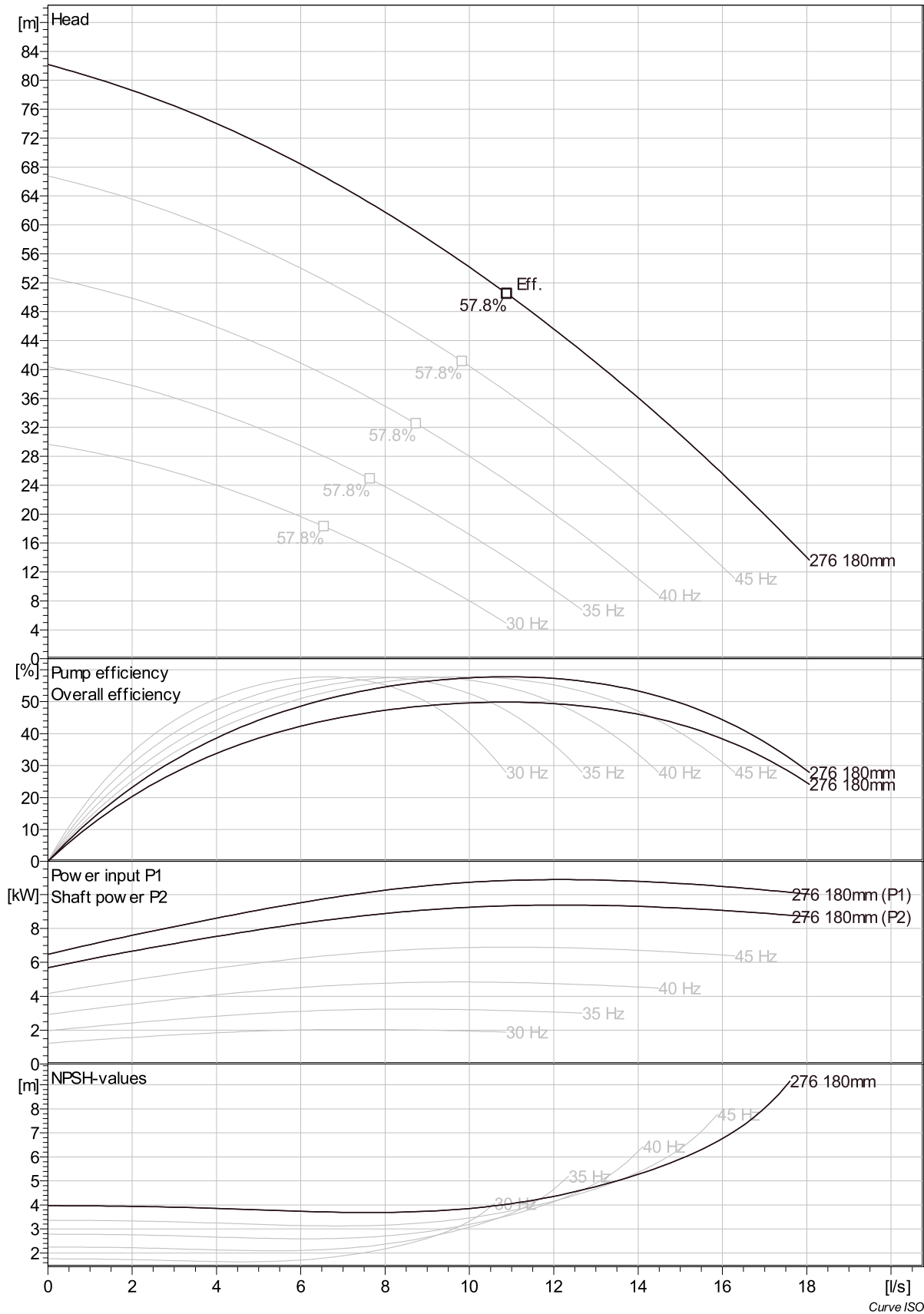


Project	Project ID	Created by	Created on 7/6/2018	Last update
---------	------------	------------	------------------------	-------------

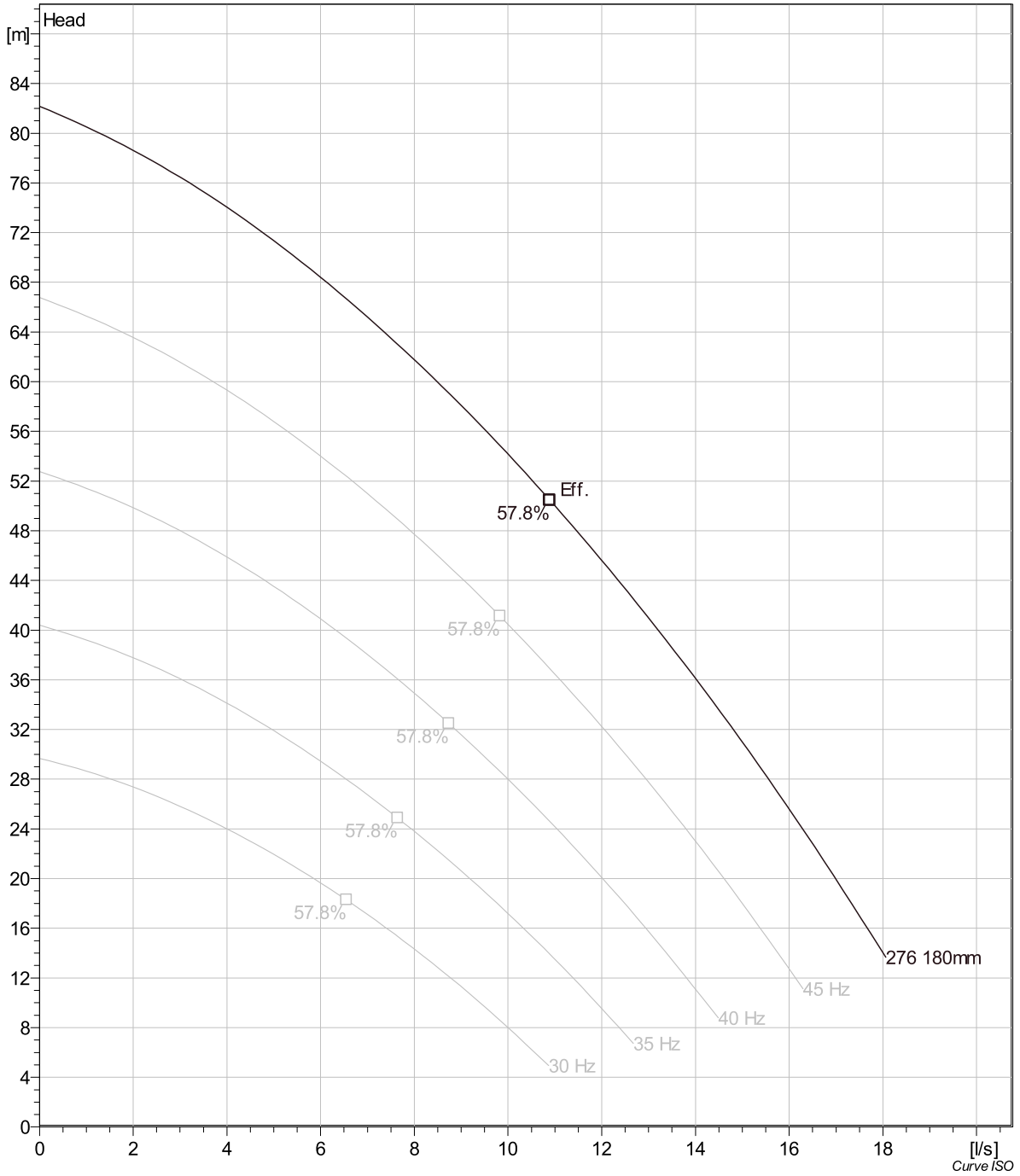
BS 2660 SH 3~ 276 Duty Analysis



Project	Project ID	Created by	Created on	Last update
			7/6/2018	

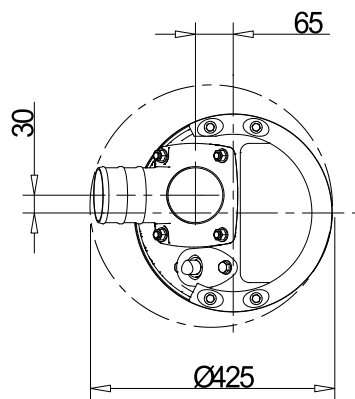
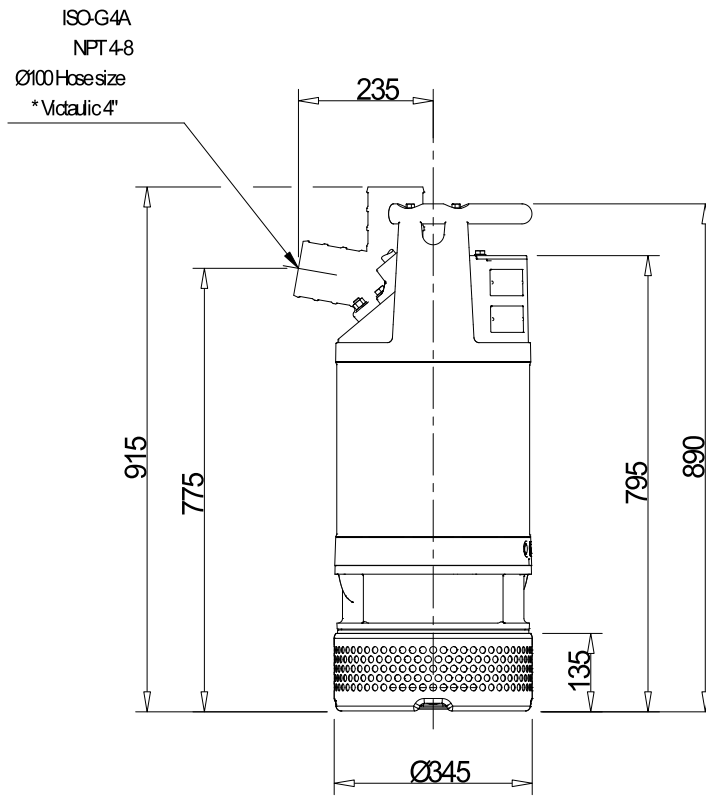


Project	Project ID	Created by	Created on	Last update
			7/6/2018	



Project	Project ID	Created by	Created on	Last update
			7/6/2018	

BS 2660 SH 3~ 276 Dimensional drawing



* Designed for "Victaulic Coupling",
according to ANSI/AWWA
C606-97

SCREEN OPENING Ø10

Weight (kg)
Total
96

BS 2660.181 SH

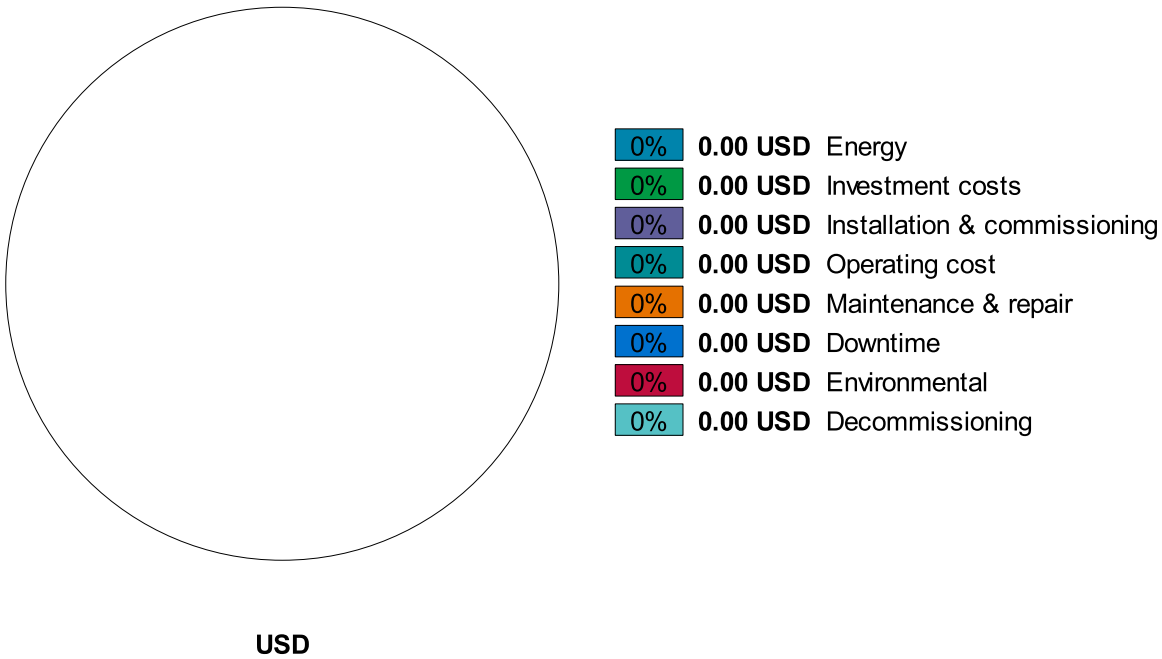
Project	Project ID	Created by	Created on	Last update
			7/6/2018	

BS 2660 SH 3~ 276

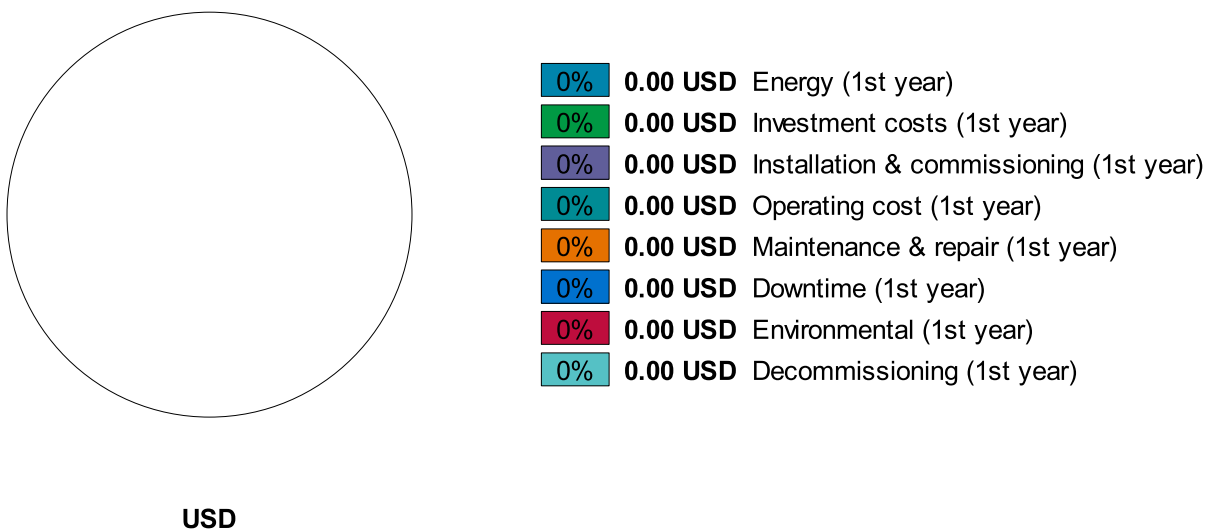
Life cycle costs (LCC)

Total lifetime	15	Inflation rate (rate of price increases)	2 %
Annual operating time	5600	Interest rate (for investment)	3 %
Energy cost per kWh	0.00 USD		
Power input P1			

Total costs



First year costs



Disclaimer: The calculations and the results are based on user input values and general assumptions and provide only estimated costs for the input data. Xylem inc can therefore not guarantee that the estimated savings will actually occur.

Project	Project ID	Created by	Created on 7/6/2018	Last update
---------	------------	------------	-------------------------------	-------------