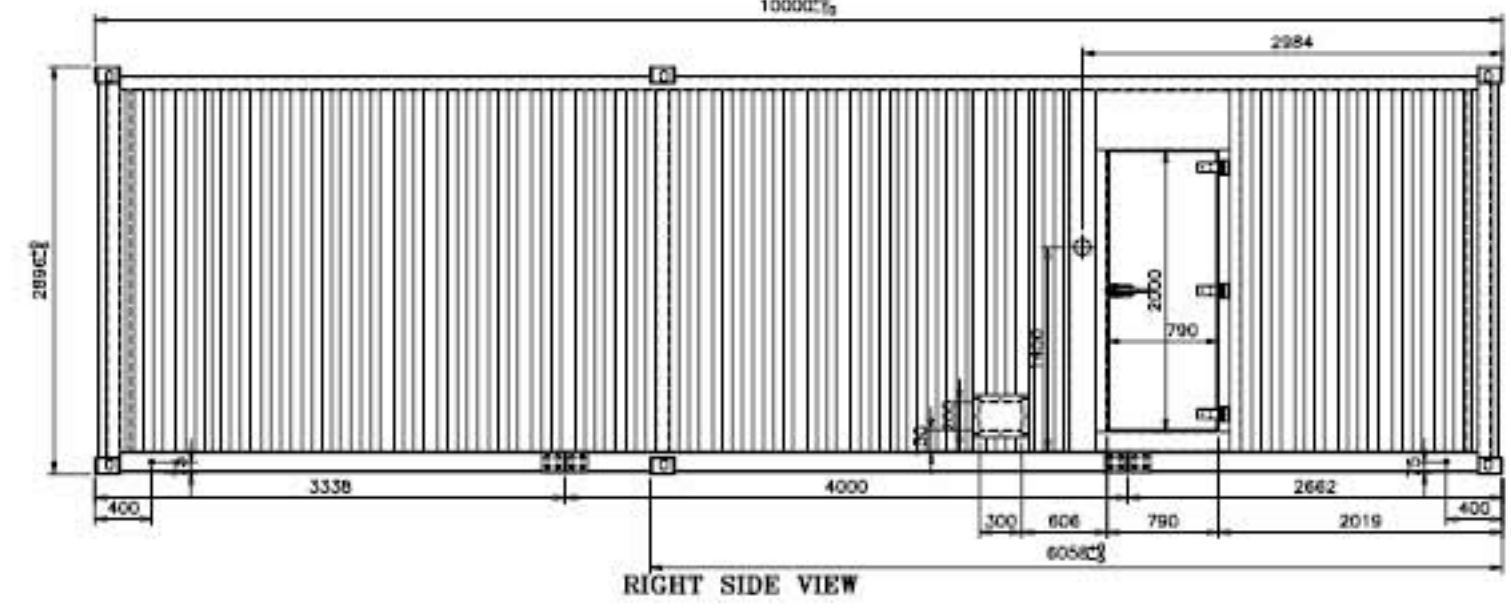
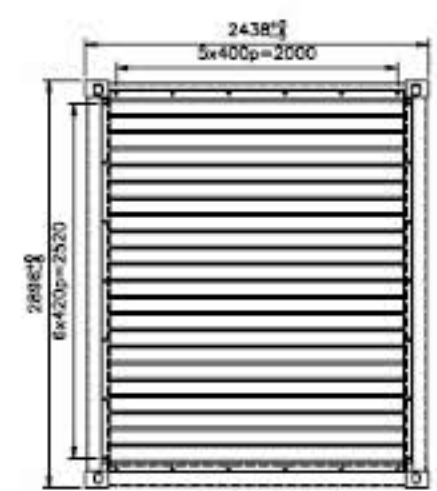
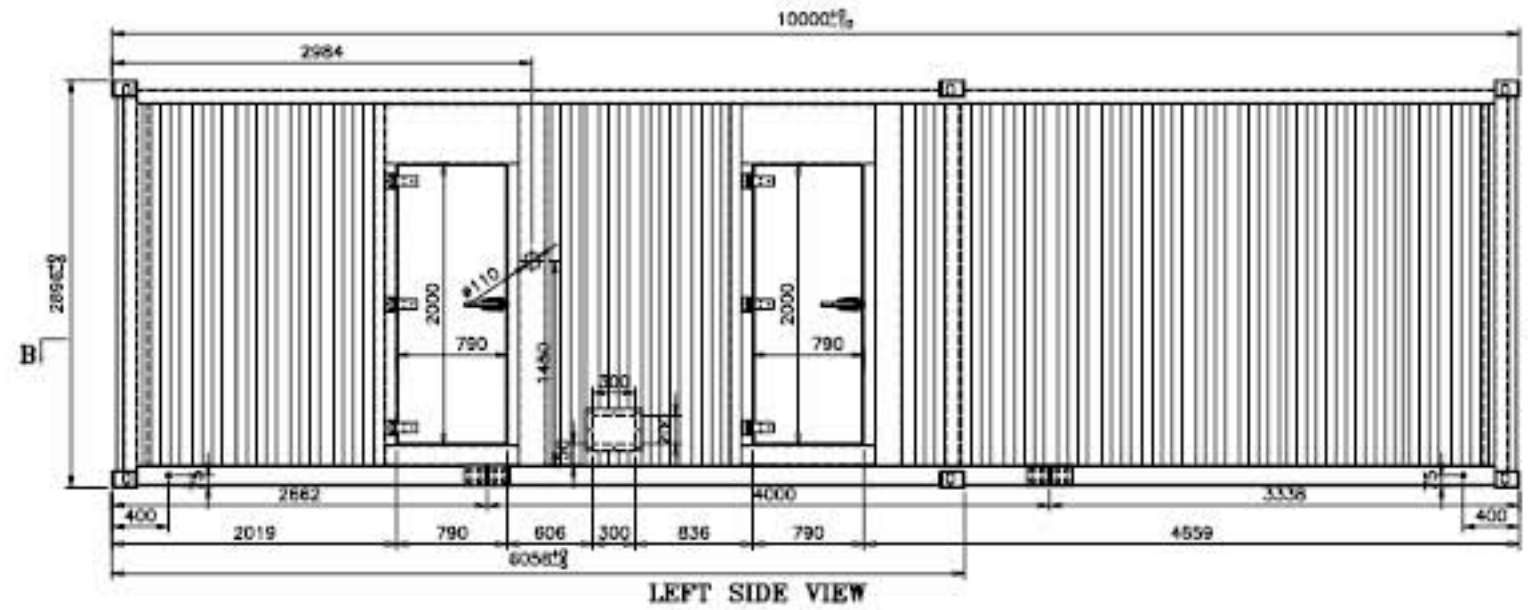
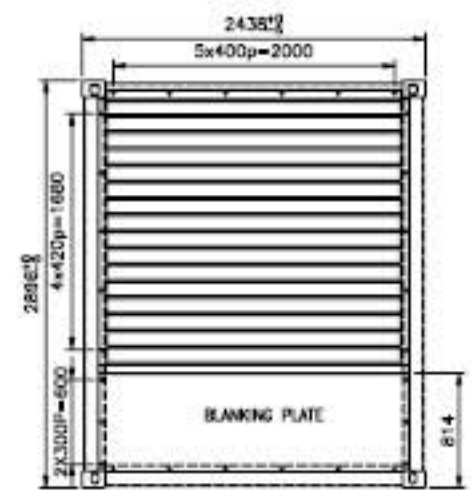
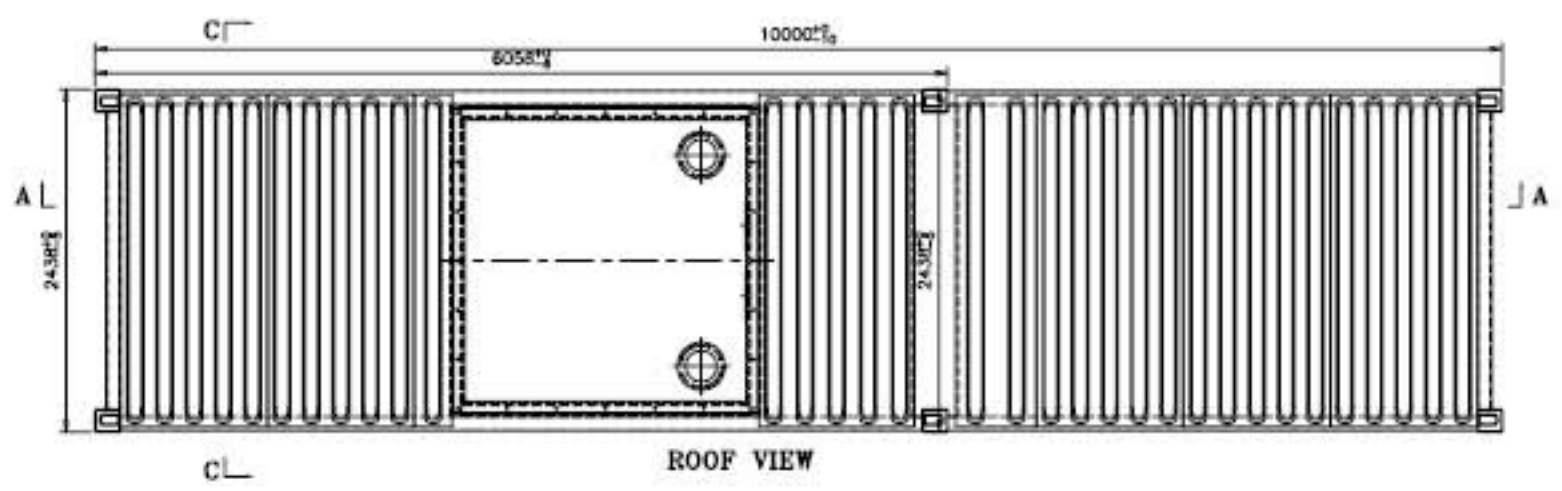


| PART NAME | MATERIAL | REMARK | |
|----------------|-----------------------------|--------------------|------------------|
| FRAME | TOP SIDE RAIL | Q235 14. 9x106x18 | |
| | BOTTOM SIDE RAIL | Q235 136. 8x159x18 | |
| | CORNER POST | SP10 16. 0 | |
| | END RAIL | Q235 | |
| | ROOF | SP10 11. 0 | |
| PANEL | SIDE | SP10 11. 0 | |
| | DOOR | SP10 11. 0 | |
| | SUB-FLOOR | | |
| | INSIDE LINING | ROOF | PEET SHEET 11. 0 |
| | | SIDE | PEET SHEET 11. 0 |
| DOOR | | | |
| FLOOR | Q235 14. 8 CORRUGATED PLATE | | |
| CORNER CASTING | SCW 48 | | |
| INSULATION | ROCKWOOL 30kg/cu.m | | |

| CLASSIFICATION | | DIMENSION | | | |
|-------------------------|--------|-----------|-----|--------|----------------|
| EXTERNAL | LENGTH | 10,000 | MM | 33' | -0/100 |
| | WIDTH | 2,438 | MM | 8' | -0/100 |
| | HEIGHT | 2,896 | MM | 9' | 0"-0/100 |
| INTERNAL | LENGTH | 6,781 | MM | 22' | -2 11/64" -100 |
| | WIDTH | 2,211 | MM | 7' | -3 3/64" -100 |
| | HEIGHT | 2,587 | MM | 8' | -5 27/32" -100 |
| INTERNAL CUBIC CAPACITY | | 38.67 | CUM | 1,365 | CUFT |
| MAX. GROSS WEIGHT | | 24,000 | KG | 52,910 | LB |



| | | |
|-------------|-------------------------------------|------|
| E33-000-06A | MARKING ASSEMBLY | 1200 |
| E33-001-06A | TASK ASSEMBLY | 1100 |
| E33-010-06A | BOUND ASSEMBLY | 1000 |
| E33-013-06A | REAR ATTENUATION SPLITTER ASSEMBLY | 800 |
| E33-014-06A | FRONT ATTENUATION SPLITTER ASSEMBLY | 800 |
| E33-020-06A | PERSONNEL ACCESS DOOR ASSEMBLY | 8700 |
| E33-028-06A | RIGHT SIDE ASSEMBLY | 6500 |
| E33-027-06A | FRONT ASSEMBLY | 6500 |
| E33-025-06A | LEFT SIDE ASSEMBLY | 6400 |
| E33-026-06A | ROOF ASSEMBLY | 6300 |
| E33-027-06A | REAR ASSEMBLY | 6200 |
| E33-026-06A | BASE STRUCTURE ASSEMBLY | 6100 |
| E33-020-06A | GENERAL ARRANGEMENT (B) | 0000 |
| E33-020-06A | GENERAL ARRANGEMENT (A) | 0000 |

| DRAWING NO. | DESCRIPTIONS | REMARKS |
|-------------|--------------|------------------------------|
| APPROVED | | SIZE: 33' x 8' x 9' 6" |
| STANDARD | | TITLE: GENERAL ARRANGEMENT A |
| CHECKED | | DRAWING NO. E33-020-06A |
| DESIGNED | | 1:40 |
| DATE | | PROJECTION |
| SCALE | | STUART POWER LTD |
| MARK | QTY | REV. A |

| UNLESS OTHERWISE STATED, WELD PARAMETER TO BE: | | UNLESS OTHERWISE STATED, LINEARITY TOLERANCE TO BE: | |
|--|----------------|---|------------------------|
| SIZE | 1-3. 3mm | 100 | 0.1mm < 10mm |
| | 1-3. 5mm | 1-3. 50 | 10mm < 318. < 1018mm |
| | BUTT WELDING | 1-4. 0-3mm | 1.5mm < 318. < 1018mm |
| | FILLET WELDING | 1-4. 3/4 t | 1.0mm < 318. < 1018mm |
| | LAP WELDING | 1-3. 1 | 1.00mm < 318. < 1018mm |
| | FLUX WELDING | 1-4. 1 | 1.00mm < 318. < 1018mm |

| MARK | QTY | REV. | FILE NO. | SIGNATURE | DATE |
|------|-----|------|----------|-----------|------|
| | | | | | |