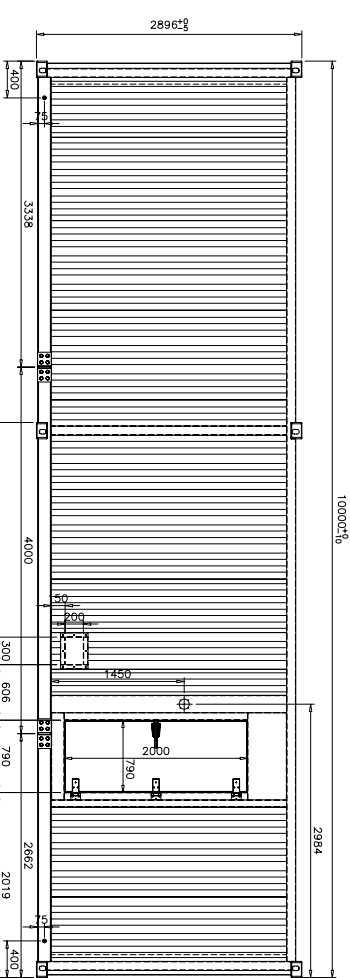
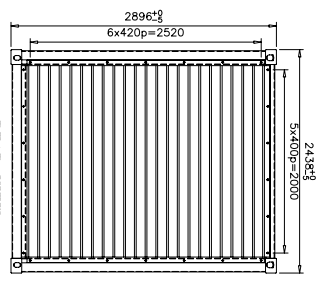
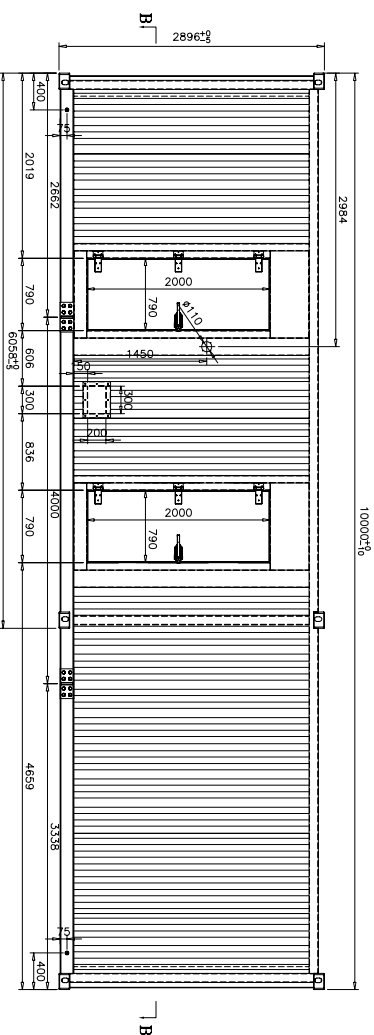
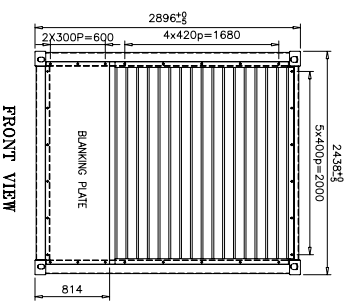
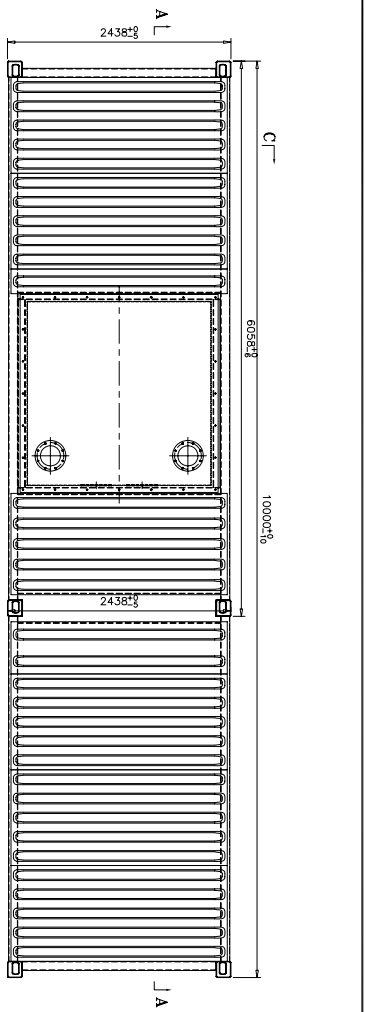


PART NAME	MATERIAL	REMARK
TOP SIDE RAIL	Q235	14.510mmx100
BOTTOM SIDE RAIL	Q235	110.0x150x150
CORNER POST	SPN-4	16.0
END RAIL	Q235	12.0
ROOF	SPN-4	12.0
SIDE	SPN-4	12.0
DOOR	SPN-4	12.0
SUB-FLOOR		
INSIDE LINING	ROOF: PREF. SHEET SIDE: PREF. SHEET DOOR:	11.0 11.0
FLOOR	Q235	14.0 CHECKERED PLATE
CORNER CASTING	SW 480	
INSULATION	FRUCTON	50kg/cu.m



UNLESS OTHERWISE STATED, WELD PARAMETER TO BE:	UNLESS OTHERWISE STATED, LINEARITY TOLERANCE TO BE:
CHAMFER	3mm < CHIL & 10mm
12.5.0mm	0 = ±1.0mm
2.0.5.5	0 = ±1.0mm
BUTT WELDING	10mm < CHIL & 10mm
h=0.2mm	0 = ±1.5mm
FILLET WELDING	50mm < CHIL & 100mm
k=3/4 k	0 = ±2.5mm
LAP WELDING	100mm < CHIL & 200mm
h=1	0 = ±2.5mm
PILC WELDING	200mm < CHIL
del	0 = ±3.0mm

CLASSIFICATION		DIMENSION	
EXTERNAL	LENGTH	10,000.8	MM
	WIDTH	2,438.3	MM
	HEIGHT	2,896.8	MM
INTERNAL	LENGTH	6,761.5	MM
	WIDTH	2,211.8	MM
	HEIGHT	2,587.8	MM
	INTERNAL CUBIC CAPACITY	38.67	CUM
	MAX. GROSS WEIGHT	24,000	KG
		52.910	LB

MARK	QTY	REV.	FILE NO.	SIGNATURE	DATE

APPROVED	STANDARD	CHECKED	DESIGNED	DATE	SCALE	PROJECTION
					1:40	

DRAWING NO.	DESCRIPTIONS	REMARKS
E3-4NS-06A	MARKING ASSEMBLY	1200
E3-4ND-06A	TANK ASSEMBLY	1100
E3-4NT-06A	BOUND ASSEMBLY	1000
E3-4NF-06A	REAR ATTENUATION SPLITTER ASSEMBLY	0900
E3-4NH-06A	FRONT ATTENUATION SPLITTER ASSEMBLY	0800
E3-4NS-06A	PERSONNEL ACCESS DOOR ASSEMBLY	0700
E3-4NS-06A	RIGHT SIDE ASSEMBLY	0600
E3-4NF-06A	FRONT ASSEMBLY	0500
E3-4NS-06A	LEFT SIDE ASSEMBLY	0400
E3-4NR-06A	ROOF ASSEMBLY	0300
E3-4NF-06A	REAR ASSEMBLY	0200
E3-4NS-06A	BASE STRUCTURE ASSEMBLY	0100
E3-4ND-06A	GENERAL ARRANGEMENT (B)	000-2
E3-4ND-06A	GENERAL ARRANGEMENT (A)	000-1

APPROVED	SIZE:
	33" x 8" x 9" 6"

GENERAL ARRANGEMENT A

MARKING NO.	DATE	REV.
E33-0ND-06A		

REV.
A

